

# Whitehorse Chamber of Commerce E-Bulletin

OCTOBER 28, 2011

BI-WEEKLY



## In This Week's Issue for October 28th...

---

1. Whitehorse Chamber Programs
  2. Advertisements
  3. Porter Creek 'D' Developments
  4. Coming Events
  5. Yukon Energy Report
  6. Yukon Chamber of Mines AGM
  7. Opportunities North
  8. Yukon Convention Bureau
-

# Whitehorse Chamber Programs

## Partnering for Success



PFS is a program dedicated to the development and expansion of the private sector in Yukon. The program receives information for the private sector community and through a very committed steering committee brings stakeholders to the table to resolve business issues and implement strategies to continue our economic growth.

## Yukon Business Development Program

The YBDP has been in operation for more than 6 years and has proven itself for many businesses in Whitehorse and Yukon. The essence of the program is that the Chamber of Commerce will bring to Whitehorse expertise for anywhere in the world to sit on a business advisory board in order to review the operations of any business and make recommendations for growth.

## Business Retention, Expansion, and Attraction

BREA is a new program at the chamber funded by the Department of Economic Development out of the Yukon Government. The project coordinator, through interviews, will make Whitehorse more business friendly in order to grow existing businesses and attract new business to the community.

## Business Training Fund

The Chamber of is in the final stages of organizing a new business training fund funded by the Department of Education, Advanced Education Branch. This program will offer opportunities for Yukoners to train and develop their expertise in order to take advantage of the economic activity we are experiencing.

# Advertisements

## ATTENTION EMPLOYERS!

### YOU MAY BE ELIGIBLE FOR A WAGE SUBSIDY OF \$7.20 PER HOUR

Through the  
**STUDENT TRAINING & EMPLOYMENT PROGRAM (STEP)**

By offering a summer employment opportunity for a Yukon post-secondary student that:

- Pays a minimum of \$14.40 per hour
- Provides a minimum of 450 hours of summer employment
- Relates to a student's field of study
- Will benefit a student's future employability

For more information or a STEP application,  
please visit our website at:

<http://www.education.govyk.ca/advanceded/employment/index.html>

or contact:

Department of Education  
Advanced Education Branch  
Ann Birnie, Employment Training  
1000 Lewes Blvd., Whitehorse, YT  
Phone: 1-867-667-5927  
Toll Free 1-800-661-0408 ext. 5927  
Email: [ann.birnie@govyk.ca](mailto:ann.birnie@govyk.ca)

**PLEASE NOTE**  
**CLOSING DATE TO APPLY:**  
**November 18, 2011**



## The Canadian Payroll Association Presents: 2011 Year-end & New Year Requirements (1-day seminar)

A key installment in our Professional Development Series, this seminar helps participants win the year-end reporting race and get a head start on the New Year requirements. Participants will gain a thorough understanding of existing payroll legislation and practices to ensure their organization's current payroll is accurate, and will look ahead to expectations for the new year and beyond.

**Date:** Thursday, November 17

**Location:** Yukon Inn To

**Register:** [http://](http://www.payroll.ca/go/?wyt)

[www.payroll.ca/go/?wyt](http://www.payroll.ca/go/?wyt)

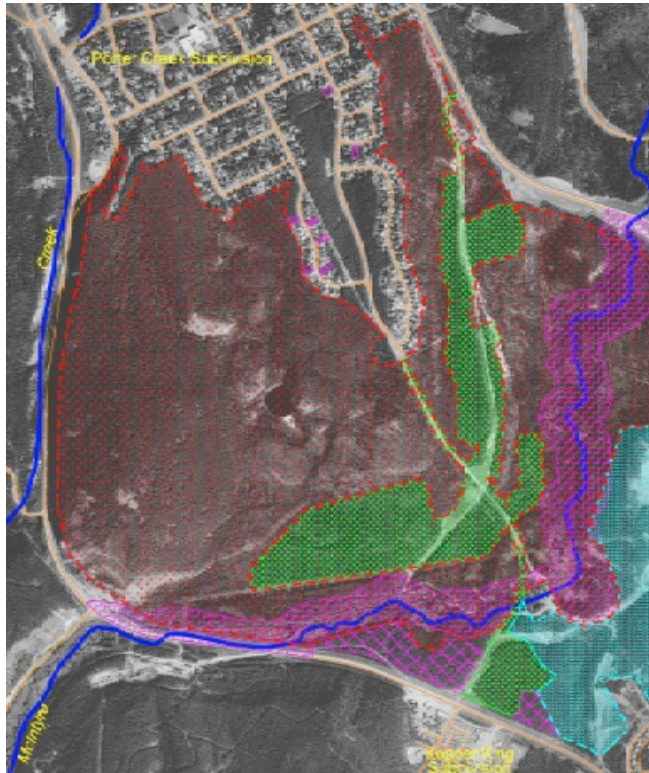
## City of Whitehorse Open House - Porter Creek D

**November 3rd**

**5pm-9pm**

**High Country Inn**

# Porter Creek D Development Area



## Porter Creek D

The Whitehorse Chamber of Commerce sits on the Porter Creek D working group with many key stakeholders discussing development in the Middle McIntyre Creek Area. This group has met several times to discuss what possible development would look like in this area, and discuss the core values of each stakeholder.

More information will be made available to the public about the Middle McIntyre Creek Area/ Porter Creek D at the City of Whitehorse's Open House on November 3rd at the High Country Inn from 5-9pm.

Please see below for the city's press release regarding the environmental report completed by consultants, EDI, as well as core values submitted to City Council by the Whitehorse Chamber.

# ENVIRONMENTAL DYNAMICS INC (EDI) RELEASES McINTYRE CREEK WILDLIFE CORRIDOR ASSESSMENT

WHITEHORSE – A housing development and potential transportation linkage in the McIntyre Creek area would not negatively impact wildlife provided mitigation measures are taken, a wildlife study on the area has concluded.

The McIntyre Creek Wildlife Corridor Assessment Report, undertaken by Environmental Dynamics Inc, concludes that:

The McIntyre Creek area is not a critical corridor for local or regional populations of any species known to pass through the area and is already considerably compromised by human use within and around the area.

As it stands, even prior to any additional development, the McIntyre Creek area is not suitable as a wildlife corridor for larger animals, including bears and moose.

Development of Porter Creek D and potential transportation linkages will not cause adverse effects to regional wildlife populations

Mitigation options to reduce potential adverse effects of Porter Creek D on local wildlife include setbacks from the creek, passage structures, and management of recreation users

Lands bordering McIntyre Creek act as a wildlife corridor for small animals and would require a buffer area around the creek if development were to occur.

“Along with commissioning this study, the City has also met with **stakeholders in the area including conservationists, developers, Yukon College, area residents and the Chamber of Commerce,**” said Planning and Development Services Manager Mike Gau. “In these meetings we have heard that there are competing interests from groups who desire different outcomes in the area.” “This wildlife report provides an important layer of information for Council to consider when deciding on any future residential and related infrastructure,” added Gau. City staff will summarize other reports and information received from the public, stakeholders and governments in a presentation to Council in December to provide a comprehensive picture for Council to consider if further planning and design should happen.

EDI and the City will be bringing the wildlife study and the results of the consultation out for public review on Thursday, November 3 from 5:00 to 9:00 p.m. at the High Country Inn.

Contact: Mike Gau, Manager of Planning and Development Services  
Phone: 668-8333  
Release: 2011-131

Whitehorse Chamber of Commerce  
Suite 101-302 Steele Street  
Whitehorse, YT Y1A 2C5

October 18, 2011

To: Mayor and Council

**Re: Core Values of the Whitehorse Chamber of Commerce in Reference to Moving Forward on the Development / Design Phase for Porter Creek "D"**

**Background:**

During the past several years the Whitehorse Chamber of Commerce has published several reports dealing with Economic Development in Whitehorse and Yukon, the housing crisis including recommendations for resolving the housing crisis. All of these reports can be found on our website at [www.whitehorsechamber.ca](http://www.whitehorsechamber.ca). Representing close to 600 businesses in Whitehorse the Chamber has surveyed our membership several times and we now have a clear understanding of what the issues are for the Business Community and how that community suggests we resolve those issues.

Housing is the number one issue in all sectors of the economy. Businesses cannot retain staff that have relocated here to work, or attract new employees to relocate to Whitehorse because of the housing issue. One of the primary concerns of the Chamber is that Whitehorse must anticipate and meet the needs resulting from continued growth. Workers are moving to Whitehorse because there are jobs here – they will continue to come however if we don't have reasonably affordable housing these people, our current and future workforce, will not stay. One good example of the demand we face was revealed recently when the City released nineteen lots and had over four hundred applicants for these lots. Clearly the City needs to work on adding supply; it needs to move Porter Creek D into the design phase quickly so housing can be developed.

The Whitehorse Chamber of Commerce has attended numerous meetings, worked with the Porter Creek D Working Group and listened to all sides of the discussion. While we do recognize that there are many values associated with the land in the Middle McIntyre Creek area, the need for development in this area is overwhelming.

**Core Values:**

**The Whitehorse Chamber of Commerce is in full support of moving forward with Porter Creek D into a development/design phase.**

At the development/design phase environmental and social impacts can be studied in depth through the Yukon Environmental and Socio-economic Assessment process. Significant impacts, many of which are known, can be carefully assessed and appropriate mitigations identified. This is why we have this process, to ensure that responsible development can occur.

**Development is needed; there can be no argument about this.**

We have hundreds of people within our city searching for homes, both long-time residents and people moving here to work. The question Yukoners are faced with is not if we should develop, but where should we develop. Porter Creek D already has basic infrastructure in place. Using the existing infrastructure will help reduce the cost of development and ultimately making housing available sooner for those looking to find a home.

**The City must control development and restore the mobility within the housing market.**

**The Whitehorse Chamber supports the conclusion of the Whistle Bend Transportation Network Impact Study for the development of a connector road to the Alaska Highway through the Middle McIntyre Creek area.**

Due to the increasing population base in Whistle Bend and the resulting traffic flow, this connector road will alleviate traffic congestion along Mountain View Drive and the access and egress to Porter Creek and other subdivisions north of Porter Creek. Again, the final routing will be assessed carefully and designed appropriately to address potential impacts.

**The City needs to work with Yukon First Nations, Private Developers and the Yukon Government to resolve the housing crisis.**

**The Porter Creek D development is an integral part of the sustainability of our economic growth.**

Porter Creek D, along with Whistle Bend and Private Development in the affordable rental market, will help re-establish the mobility in our housing market and create adequate housing to meet the needs of our expanding population: housing = workers = economic growth

**We need to mitigate any impact that development may have, but not stop development.**

The borders of the proposed Porter Creek D development area maintain at least a one hundred meter distance from the creek. The Middle McIntyre Creek area is quite large, and the proposed development area is a small part of that area.

**All trails and recreational pathways used within this area will also be maintained, either staying where they are or re-routed in order to have the same connection points.**

**Once Porter Creek D is approved to move forward there are still many phases that will allow for input regarding zoning, design, and the mitigation of environmental impacts.**

# Mount Sima Business After Hours

Thursday November 3rd

5:00-7:00pm

Mount Sima Lodge

Join us next thursday for a great evening. Learn all about the new facilities opening up at Mount Sima. Come out and see what's in store for this season.

## Mid-Arctic Technology Business After Hours

November 10th, 2011

206 Jarvis Street

5:00 - 7:00pm

## Air North Business After Hours

December 1st, 2011

Air North Hangar

5:00-7:00pm

mid arctic  
technology services



Contact the Chamber to RSVP for any of these special events at [business@whitehorsechamber.ca](mailto:business@whitehorsechamber.ca)  
or 667-7545

## Opportunities North 2011

The Yukon Chamber of Commerce just wrapped up a very successful Opportunities North 2011 Conference.

This two day conference provided valuable information to the business community regarding key game changers in Yukon's future.

### Yukon Chamber of Mines AGM

Yukon Chamber of Mines 2011 Annual General Meeting will be held on Tuesday November 22, 2011 at the High Country Inn in Whitehorse, Ballroom A/B 11:30am – 1:30pm. Geoscience tickets and AGM lunch tickets are still available at

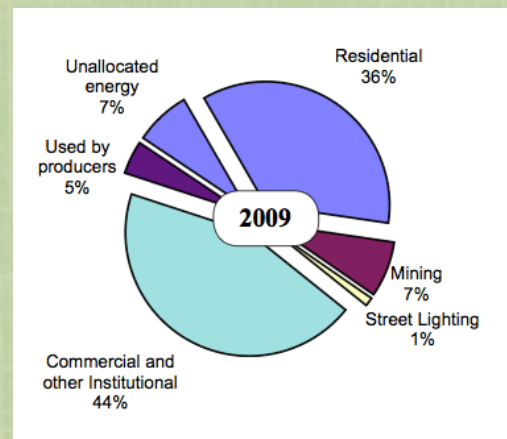
<https://yukonminers.merchantsecure.com/YukonGeoscienceForum/GeoscienceRegistration.aspx>

# Yukon Energy Report

## Electricity and Heating Fuel Combined Expenditures



## Electricity Distribution



## Yukon Convention Bureau Fall Sales Mission

YCB would like to extend our gratitude and congratulate all our partners in making our 2011 Fall Sales Missions a huge success!

This year YCB partnered together with five of our members to attend a new trade show series for the YCB sales line up. The Travel Trade Canada Silver Shows, were held in Ottawa and Vancouver and were a great success. Attendance for both shows was excellent and provided YCB with a number of leads with independent, corporate and non for profit meeting planners and executives. The contacts made at these two trade shows have *already* produced formal bid requests (these sometimes can take years to generate) and a number of future business leads.